

ANESPA

kanzen water

OUR SKIN IS OUR LARGEST ORGAN

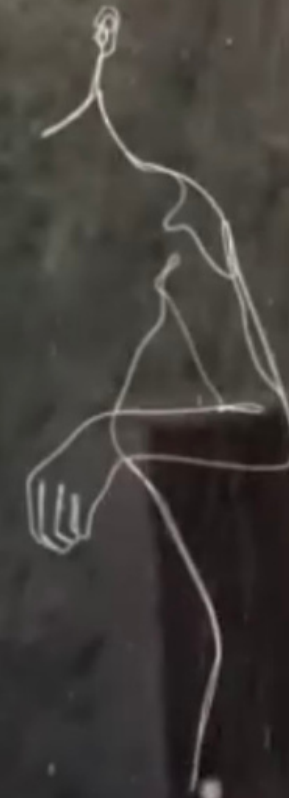
heal from the outside in

hoolawai.com

LET ME INTRODUCE YOU TO . . .

THE ANESPA

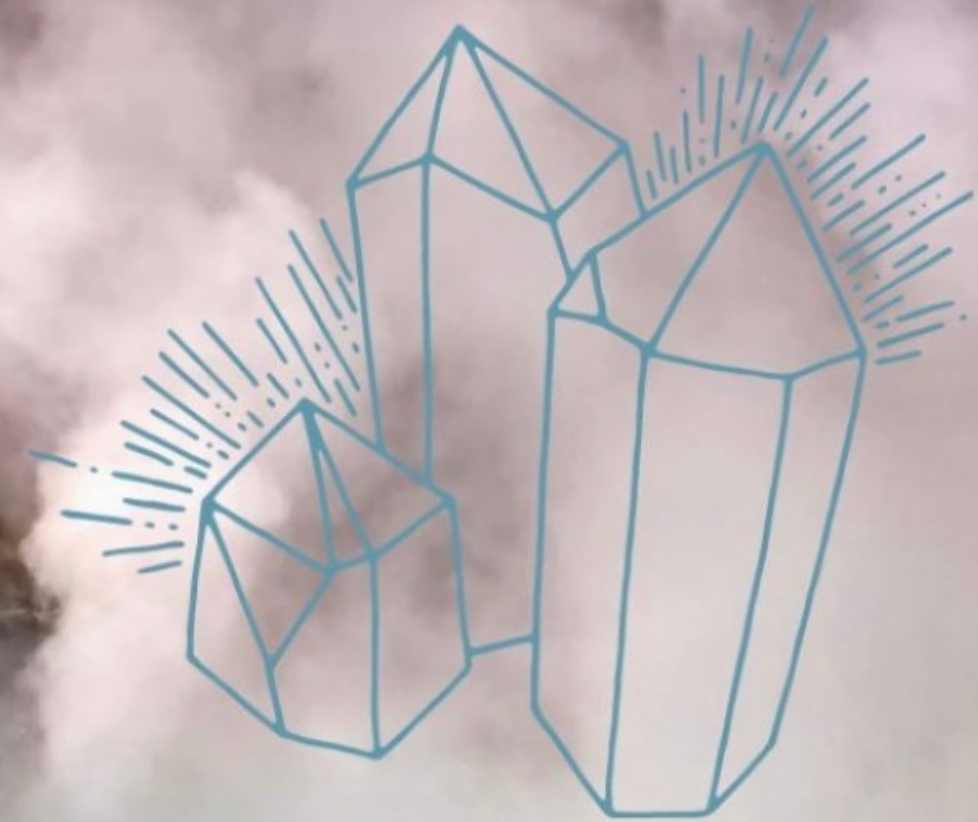
in-home shower + bath filter



HOW THE MAGIC HAPPENS

its nature's original design

The anespa works by bringing elements, minerals and crystals of sacred Japanese hot springs into your shower or bathtub



Power stone : generates strong negative ions for relaxation

MIC stone: generates activated mildly alkaline water

Natures Elements



MICA STONE

Encompasses an ability to rebalance hemispheres of the brain for mood swings, depression and stress. Mica stone deflects negative energy and acts as a shield from electromagnetic radiation. ***If you spend time on a computer, make sure to bath in Anespa every evening.***

POWER STONE

Ceramic elements from Chikulan generating strong negative ions which create a relaxing and healing thermal effect. *Its one of 6 infinity stones whose mythology is said to have initiated the universe, a powerful stone.*

IT FEELS SO GOOD..
TRUST THE FEELING
your body knows

when we open our skins breath with hot water, and enable these elements to soak in, we feel amazing afterwards.

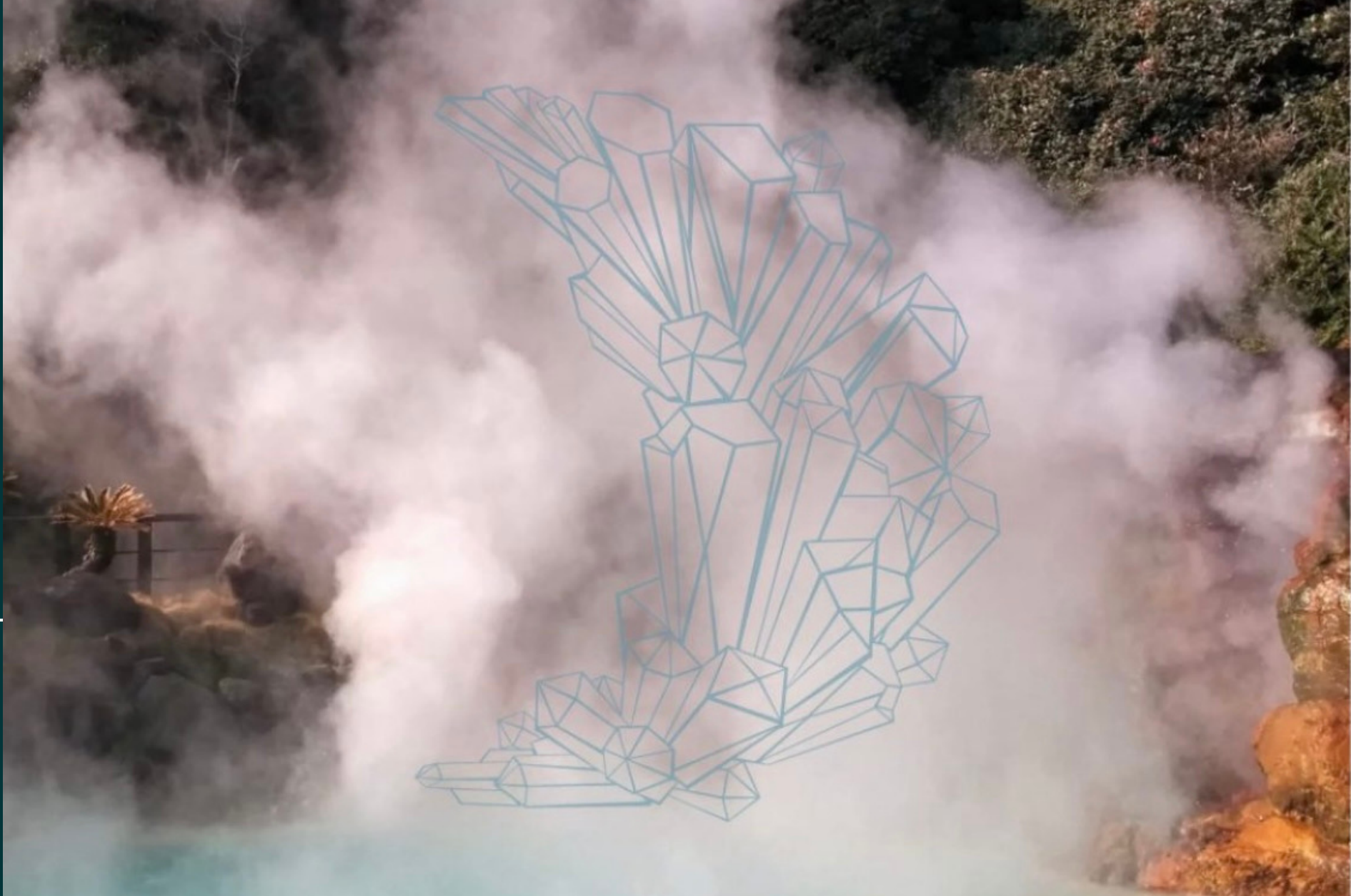
We are healing our body from the day, but also a lifetime of accumulated stress, chemicals and toxins.

you are worth it

SCIENCE + FEELING

this product is supported

science support this product as well
as thousands of testimonials



The Anespa contains Tufa mineral stones from a Japanese hot spring. In general, because of the mineral stones hot springs contain studies have found therapeutic benefits like lowered blood pressure, improved circulation, increased metabolism and immune system function, decreased stress and improved QOL

ANESPA DELIVERS

an experience like no other

hoolawai.com

NEODYMIUM MAGNET



Change the physical properties of the water by decreasing surface tension so that it is more easily absorbed

TOURMALINE IMPREGNATED CARBON FILTER



Tourmaline is a boron silicate mineral that emits **negative ions** and activates the water while the carbon filter **removes chlorine, THMs and other impurities** to prevent drying out of skin and hair to give the water a spa-like feel

Tourmaline is one of nature's most potent healing minerals. It's known to release tension or blocks and increase flow of blood and lymph. It's also effective for re-balancing the hemispheres of our brain and enabling peace of mind.

hoolawai.com (808)464-5259
dr.amberberg@gmail.com

Natures Elements

TUFA MINERAL STONE

from the futamata
radium hot springs in
Japan. This stone is
made of deposited and
hardened calcification
lime- calcium
carbonate containing
radium

NEODYMIUM MAGNET

condenses water molecules
to activate the water making
it stimulated for better
absorption of minerals.

TOURMALINE

removes blocks and spinal
tension increasing circulation.
activates water by using
surface actives with negative
ion. The carbon filter removes
trihalomethanes, which is
carcinogenic. it also
rebalances brain
hemispheres

We are made of nature, we heal best with natural elements

- **OUR LIVES HAVE REMOVED US FROM NATURE**

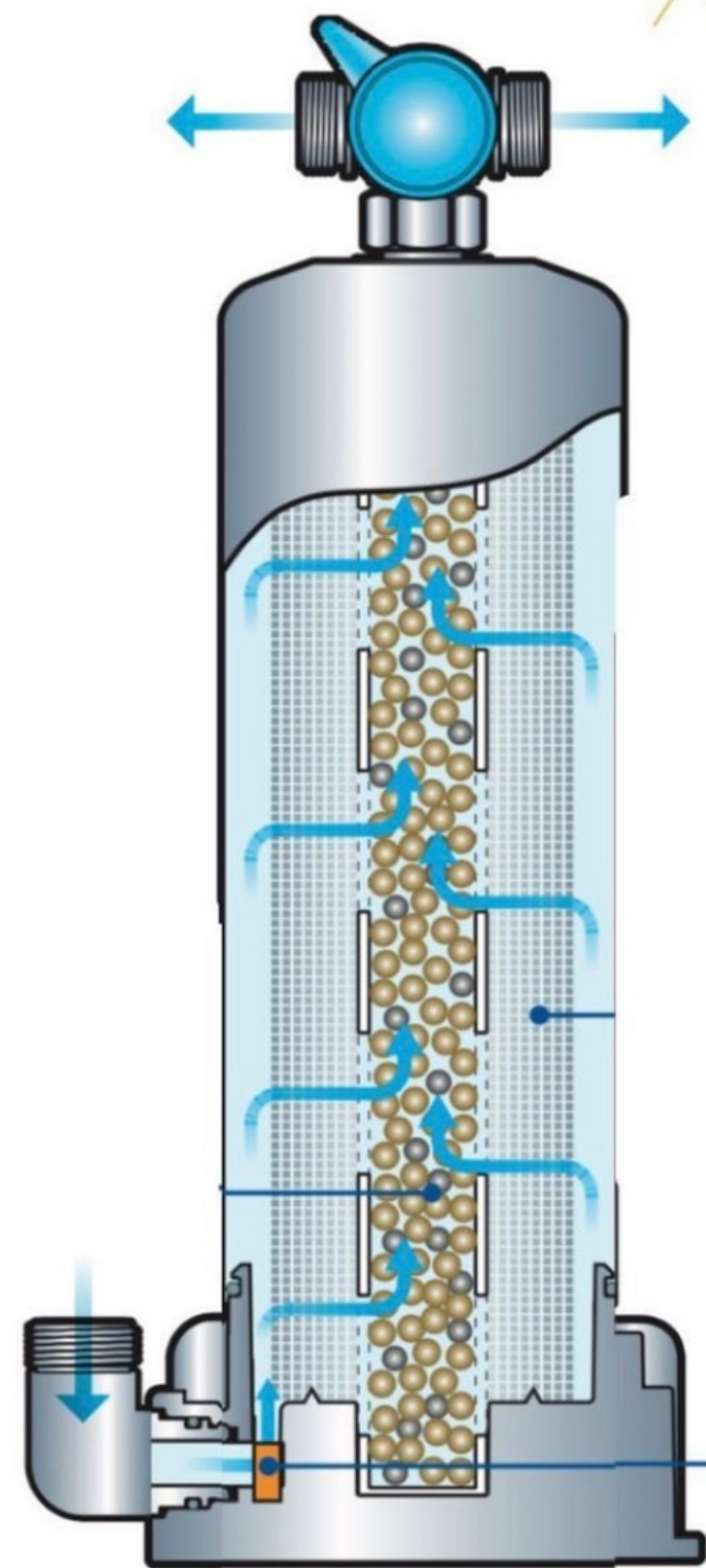
most of us live far away from hot springs and waterfalls that we can bath in daily; we are absorbing pollution, chemicals and toxins.

- **OUR BODIES ARE HURTING, BEGGING TO BE RECONNECTED**

- **ANESPA AND KANGEN ARE HOW WE DO THIS TODAY**

as long as we are still living and trying to function in society, getting anespa and kangen water in your home is how we stay healthy in our everyday lives.

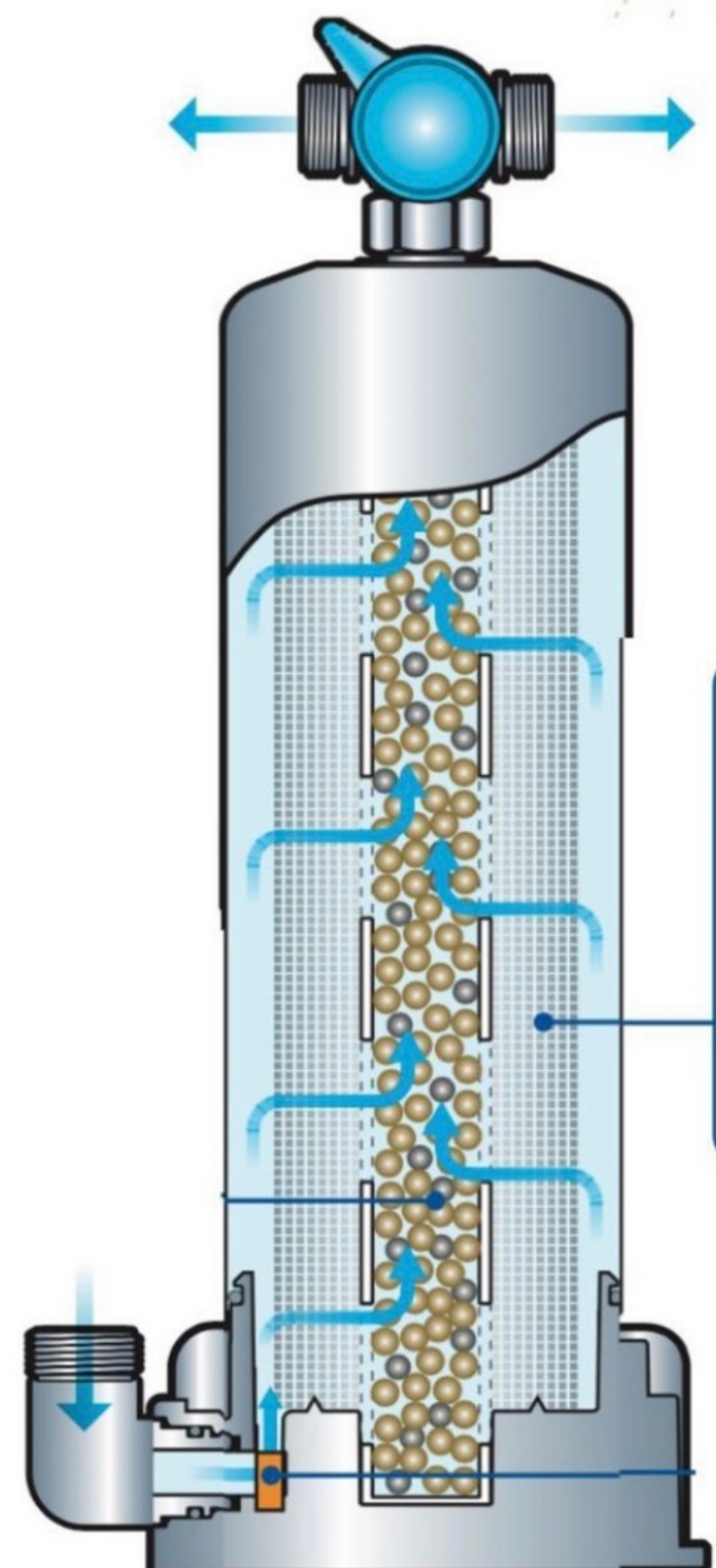
STEP 1: MAGNETIZATION



Neodymium magnet
This high quality powerful magnet can decompose the water molecules into smaller clusters to activate the water and change the water to slightly stimulated water. At the same time, it also helps water to better absorb minerals. The effect is semi permanent.

*Clean
Pure*

STEP 2: FILTRATION



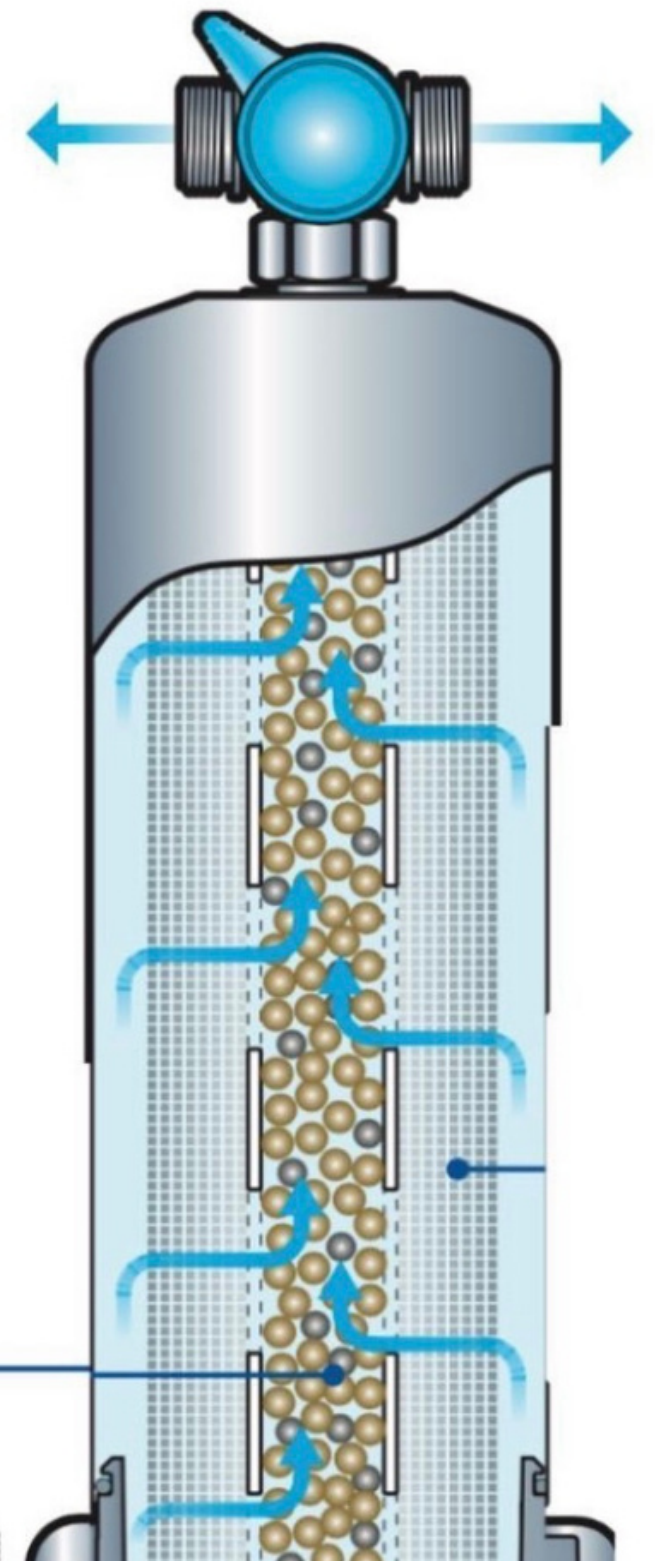
Water purification cartridge
(Tourmaline impregnated activated carbon fiber)
The characteristic of Tourmaline is to activate the water by using surface-active and negative-ion effect. Further, removes all the impurities such as organic compounds like Trihalomethane and fungus/dust from the tap water with the help of activated carbon fiber. It changes the tap water to good quality water and further enhances the efficiency of the ceramic balls.
(Varies depending on the volume / quality of water)

Revitalized

STEP 3:

MINERALIZATION

Ceramic cartridge
The cartridge has a layer of ceramic filling.
Ceramic balls of both Futamata Radium Hot spring and Chikutan are comfortably filled in a single cartridge.
(Refer the following for details)



TO PURCHASE OR FOR MORE INFORMATION

*all products are a simple set up, user friendly
and extremely affordable. Under \$3K, last
30years, you will have healing benefits of this
product for a lifetime!*

DR.AMBERBERG@GMAIL.COM

(808)464-5259

HOOLAWAI.COM *shop page to order*

